

# *Draft Regulator Installation*

Installation is to be completed by properly licensed heating and boiler technicians that have also been trained and certified by Stanlin Group Inc for installation of the Draft Regulator. It's important that the regulator is installed, adjusted and set properly to maximize the fuel saving benefit. At the time of installation the boiler or furnace is also adjusted to work in concert with the Regulator.

Prior to installation the equipment is tested and prior fuel bills are examined to ensure that there is a suitable application for the Regulator. If the application makes sense, then the installation proceeds. Typically there is one unit installed in the flue stack for each boiler or furnace in the building, so one installation could involve several Regulators.

Here are some pictures that show various stages of a typical atmospheric installation:



**STEP 1:** Pre Installation Flue Gas Analysis



**STEP 2:** Cutting Out of Section of Venting to Accommodate Regulator



**STEP 3:** Final Removal of Old Venting Section



**STEP 4:** Installation and Adjustment of the Regulator in Boiler Venting



**STEP 5:** Securing unit



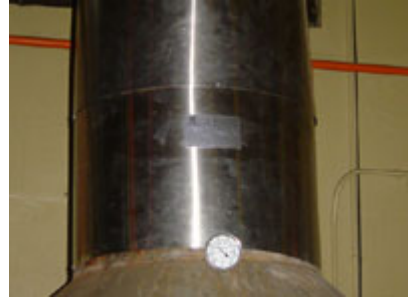
**STEP 6:** Post Installation

## Regulator To Venting



**STEP 7:** Final Adjustments to Boiler to Optimize Running with the Regulator

## Flue Gas Analysis



**STEP 8:** Completed Installation