



## Stanlin Energy System - Draft Regulator Case Study

*Smokey Point Community Church  
Arlington, WA*



**Smokey Point Community Church, near Arlington, Washington - Is Saving Over 30%**

Here are the results from the 4 Hot Air Furnaces that heat the Auditorium / Gymnasium.

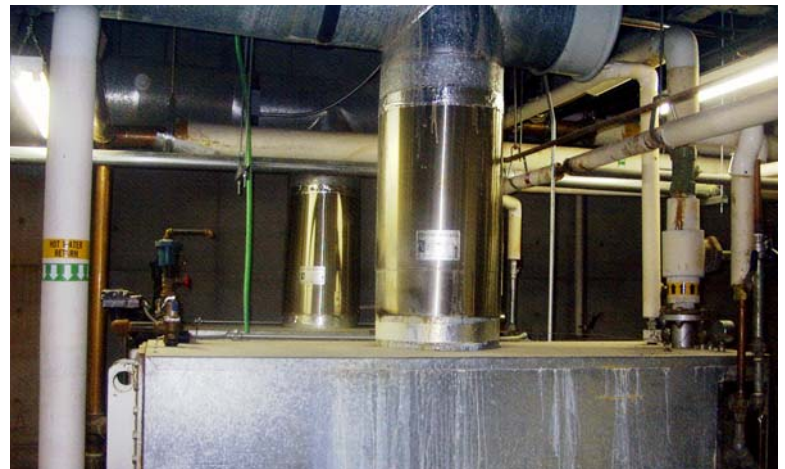
**Hot Air being discharged into Auditorium / Gymnasium**

Furnace	Before Temperature	After Temperature	Degrees Increased	% Increased over 70°
Furnace #1	123°	137°	+14°	31.77%
Furnace #2	131°	149°	+18°	29.51%
Furnace #3	124°	141°	+17°	31.48%
Furnace #4	119°	133°	+14°	28.57%

The Fan start times were about 1 minute quicker after thermostat was turned on.

Fan ran over 1 minute longer after thermostat was turned off.

*The Auditorium / Gymnasium warms up much quicker.*



**Contact a ECMI Associate to Schedule a Feasibility Study for Your Facility!**

**414-964-0072**

**[www.ecmi.us](http://www.ecmi.us)**