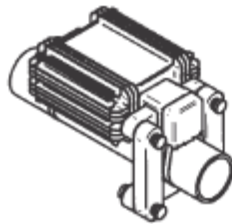


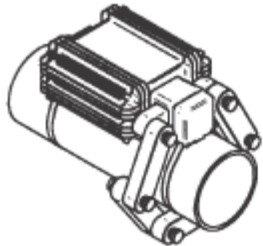
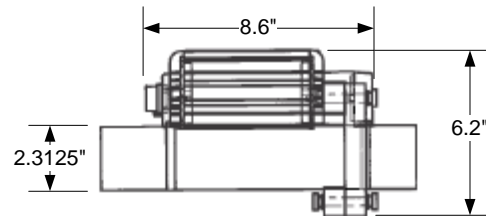


## P Unit Sizes and Specifications

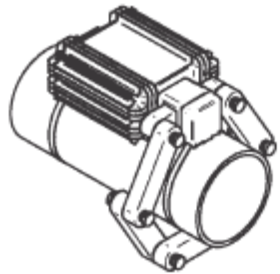
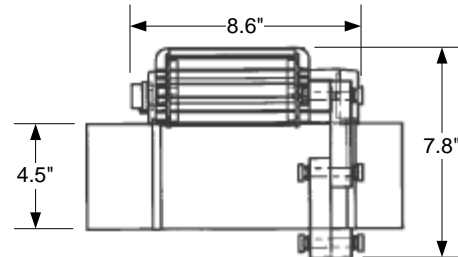
Note: Unit DOES NOT have to fit tightly on the pipe!



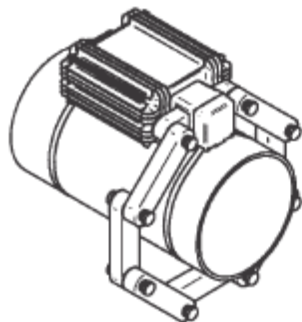
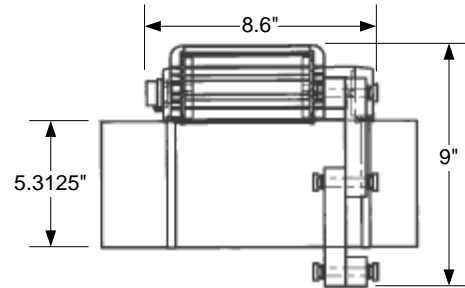
**P60**



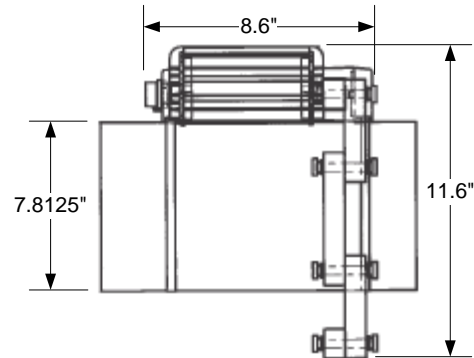
**P100**



**P120**



**P160**



Installation is accomplished easily by first securing the unit on the pipe using the hardware included, and then assembling the ferrite ring around the pipe.

Installation can usually be accomplished within minutes!

Please refer to the Hydropath Spec Guide for complete specification and installation guidelines.

